

Solid Plastic Colors

Our High Density Polyethylene (HDPE) material offers the highest level of durability for high traffic areas. Waterproof, resistant to denting or vandalism, and impervious to humidity or corrosion, these partitions are resilient, long-lasting and very simple to maintain. Material and color finishes offered are homogenous, not a surface application, so delamination is never a concern. A solid plastic installation is a great option for any high-volume washroom project.



Beige



Black



Blueberry



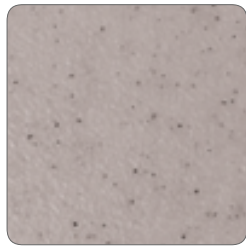
Bone



Bronze



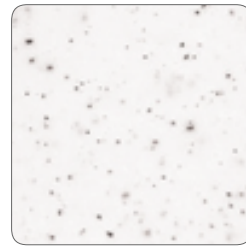
Burgundy



Canyon Granite



Fossil



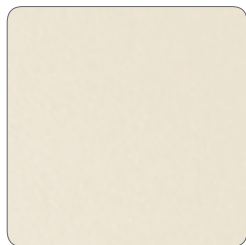
Frost Granite



Hunter



Light Gray



Linen



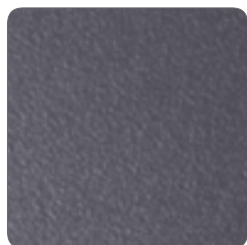
Mocha



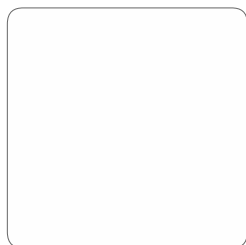
Moonlight Granite



Paisley



Slate



White

Colors are printed representations and should only be used as a reference.
Please contact us for sample color chips to be mailed.
Custom color options available upon request

AAMCO

ALL AMERICAN METAL CORP.

Current standard NFPA-286 partition color selections



Black



Blueberry



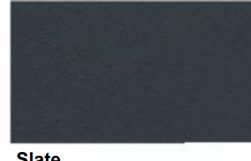
Paisley



Grey



Linen



Slate

PROPERTY, Units of Measure ¹	Test Method	TYPICAL VALUES	
		SIMOBOARD Defender HDPE	
Specific Gravity	ASTM D792	1.17 g/cm ³	
Water Absorption, %	ASTM D570	<0.01 %	
MECHANICAL			
Tensile Strength @ Yield	ASTM D638	3,300 psi	22.75 MPa
Elongation @ Break, %	ASTM D638	>5%	
Flexural Modulus	ASTM D790	245,000 psi	1,689 MPa
Notched Izod Impact	ASTM D256	0.75 ft-lb/in.	40 J/m
Hardness, Shore D	ASTM D2240	72	
THERMAL			
Continuous Service Temperature	Maximum	170 °F	76.7 °C
Melting Point	ASTM D3418	267 °F	130.7 °C
Heat Deflection Temp. @ 66 psi (0.45 MPa)	ASTM D648	167 °F	75 °C
Heat Deflection Temp. @ 264 psi (1.8 MPa)	ASTM D648	110 °F	43.4 °C
REGULATORY CODES			
NFPA 286:15	—	PASS	
International Building Code (2015) Chapter 8, Section 803.1.2.1	—	PASS	

¹All tests at 73 °F (22.8 °C) in dry conditions unless otherwise noted.

All American Metal Corp.
200 Buffalo Avenue
Freeport, NY 11520
(516)623-0222
info@allamericanmetal.com
http://allamericanmetal.com

SPECIAL ORDERS/COLORS AVAILABLE UPON REQUEST
 Extended Lead Times Required
 (Minimum 50+ Stalls)