

Stainless Steel Colors

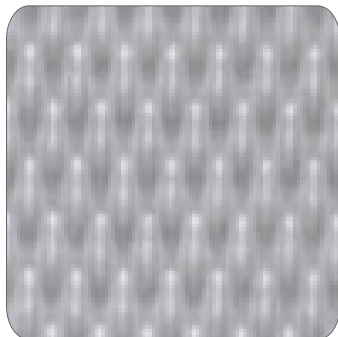
For lasting beauty that blends into any washroom design and will easily withstand years of use, no matter how high-volume, stainless steel is the top choice. Resistant to corrosion, rust, staining, and offering simplified maintenance, this is an ideal option for any heavily trafficked washroom. This material is available in a standard #4 brushed finish, or you may select from a number of optional textured finishes for greater durability and design appeal. This material is available in any of the four design styles.



Random Swirl Stainless Steel



Stainless Steel #4 Finish



Diamond Texture
Stainless Steel



Leathergrain Texture
Stainless Steel

Colors are printed representations and should only be used as a reference.
Please contact us for sample color chips to be mailed.
Custom color options available upon request