

## Solid Plastic Colors

Our High Density Polyethylene (HDPE) material offers the highest level of durability for high traffic areas. Waterproof, resistant to denting or vandalism, and impervious to humidity or corrosion, these partitions are resilient, long-lasting and very simple to maintain. Material and color finishes offered are homogenous, not a surface application, so delamination is never a concern. A solid plastic installation is a great option for any high-volume washroom project.



Beige



Black



Blueberry



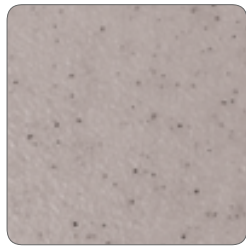
Bone



Bronze



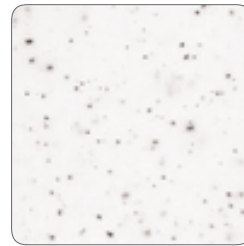
Burgundy



Canyon Granite



Fossil



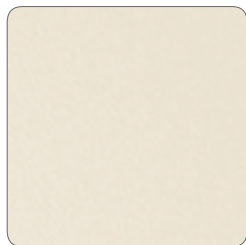
Frost Granite



Hunter



Light Gray



Linen



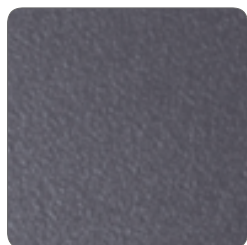
Mocha



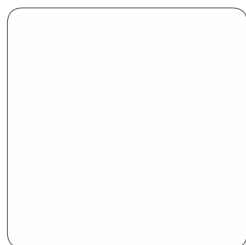
Moonlight Granite



Paisley



Slate



White

Colors are printed representations and should only be used as a reference.  
Please contact us for sample color chips to be mailed.  
Custom color options available upon request